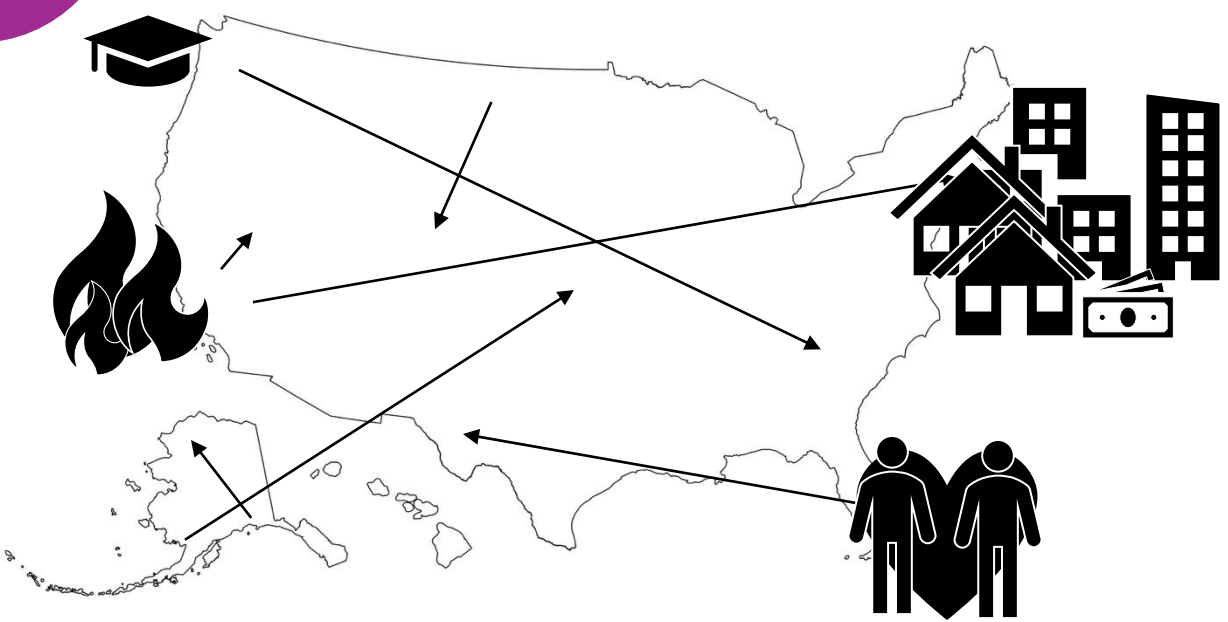


Inferring Fine-Grained Migration Flows Across the United States

Gabriel Agostini¹, Rachel Young², Maria Fitzpatrick³, Nikhil Garg¹, Emma Pierson⁴

¹Cornell Tech ²University of Minnesota Twin Cities ³Cornell University ⁴University of California Berkeley  gsagostini@infosci.cornell.edu

1 Over 40 million people move every year in the US



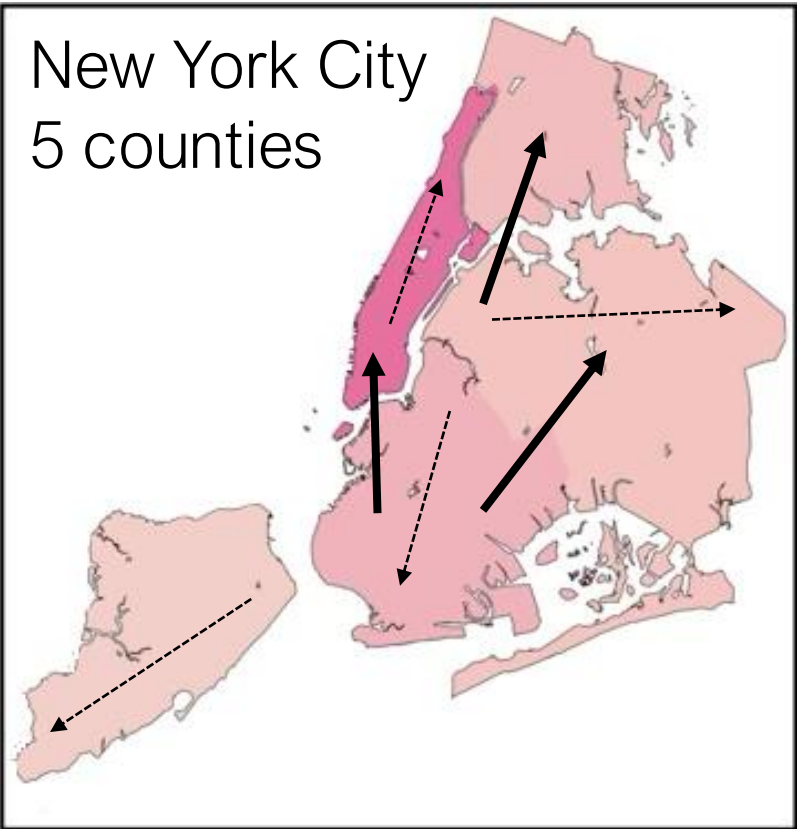
results and causes of migration interest researchers and policymakers

About 60% of these moves happen within a county

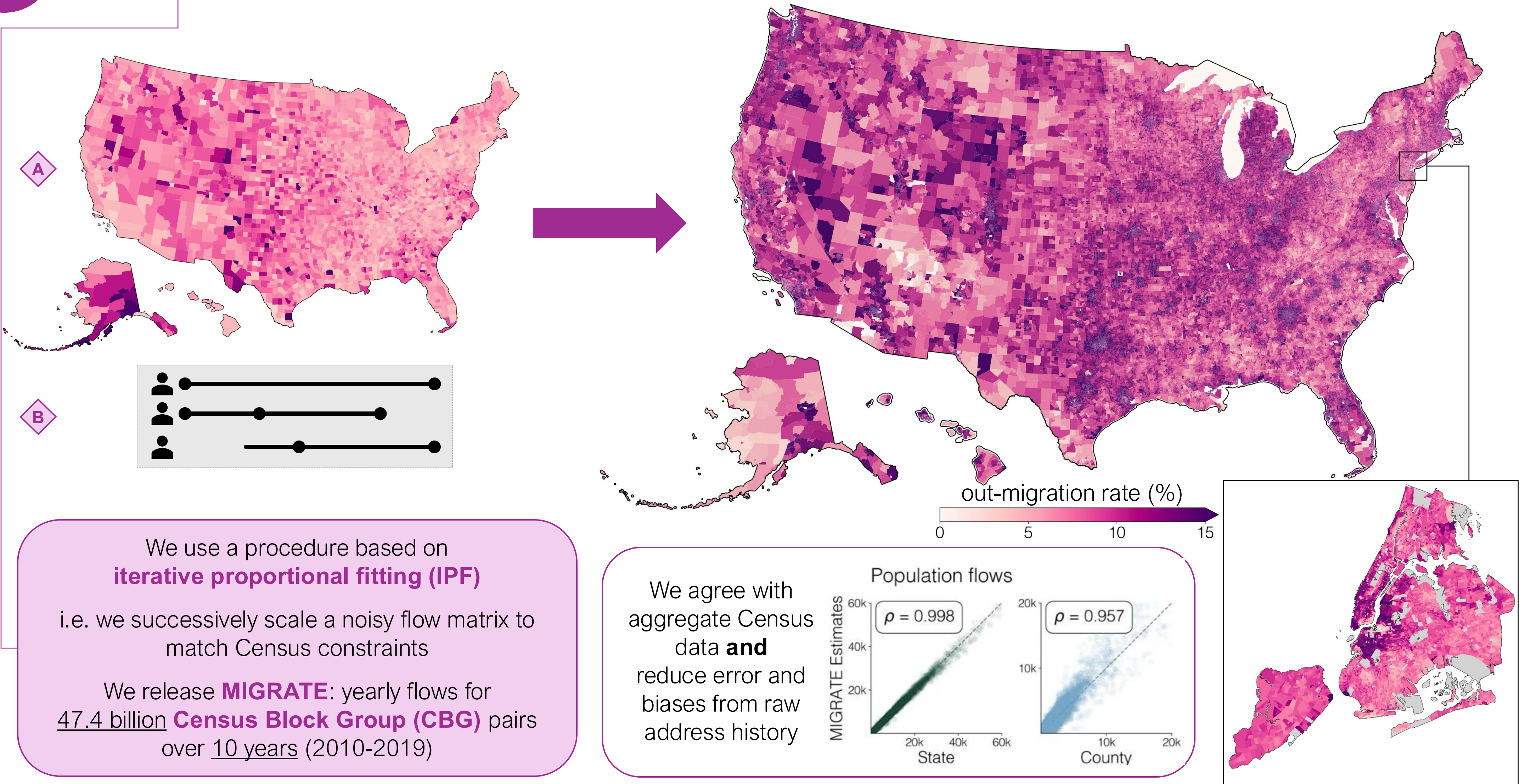
2 Publicly-available migration data is temporally and spatially too coarse

The American Community Survey only reports county-to-county migration in 5-year periods

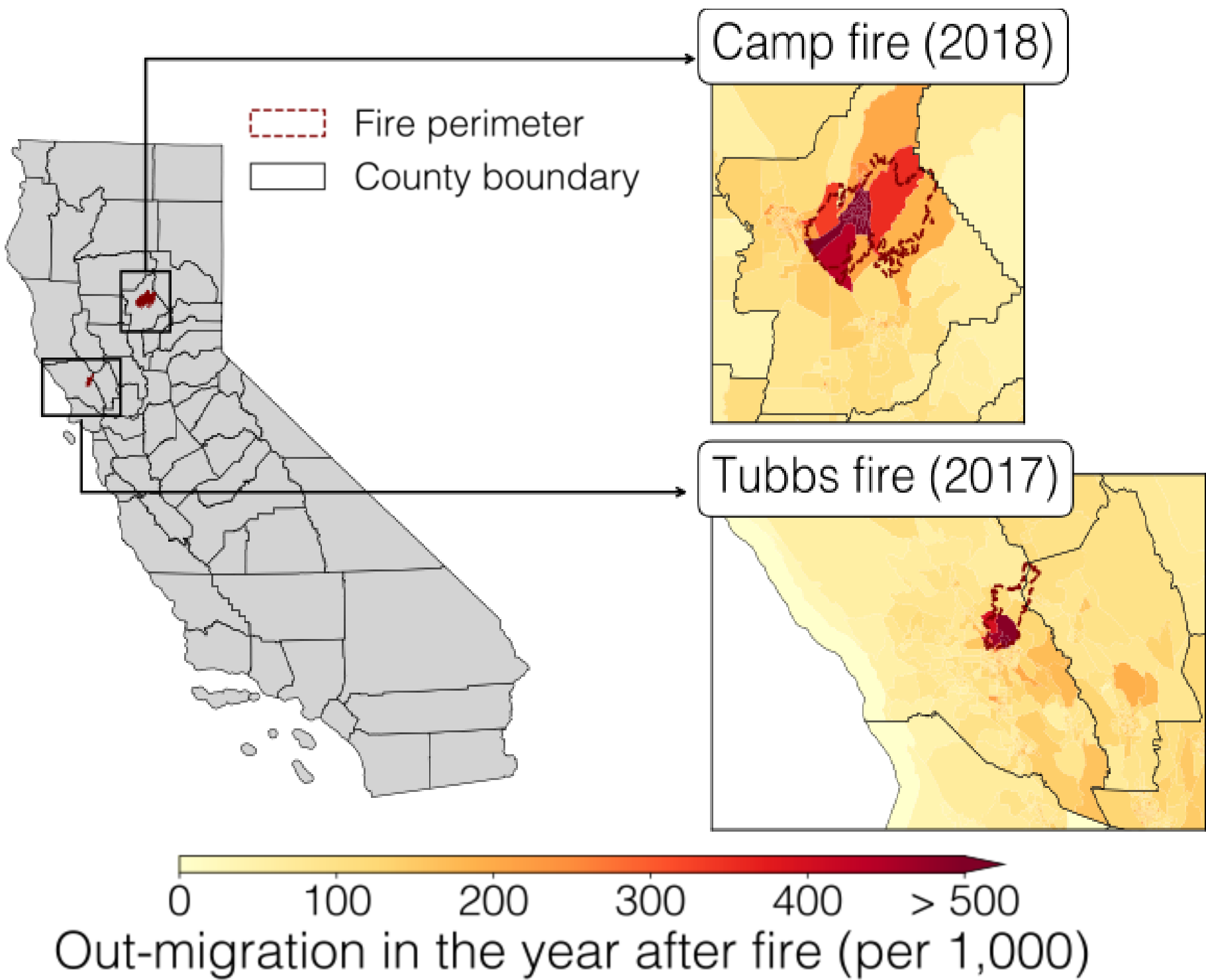
Most migration flows are invisible in this data!



3 Our method reconciles coarse but reliable Census data with more granular but biased address histories

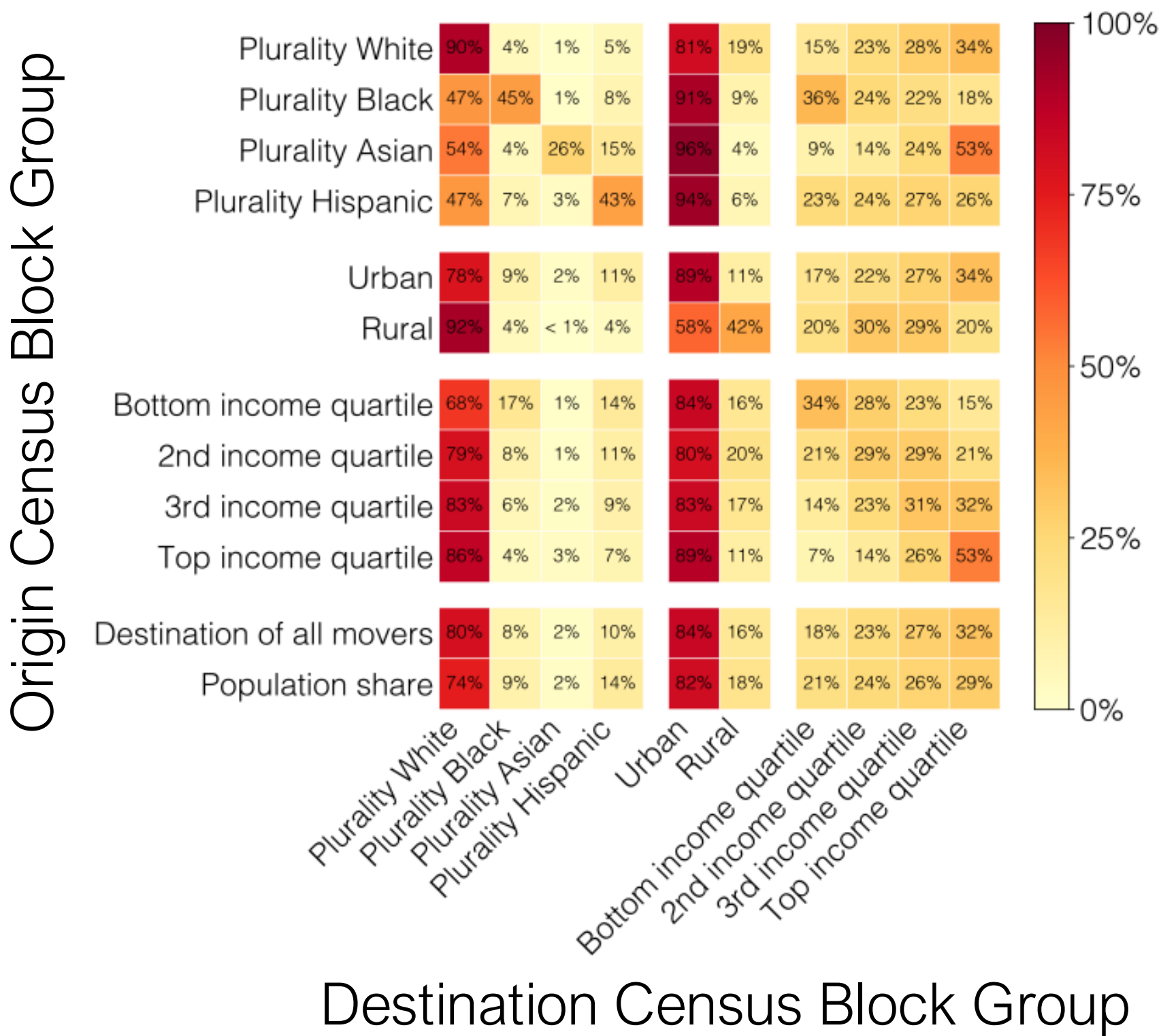


4 We find evidence of migration in response to local policy and environmental impacts



MIGRATE reveals striking out-migration following California wildfires, invisible in county-to-county data

5 We document nationwide trends in migration, stratifying by demographics



MIGRATE provides evidence of racial homophily and income-upwards mobility in migration

Our data is being used by over 100 teams from universities, non-profits, and government institutions
Request access to **MIGRATE** and read our full paper on the project website

